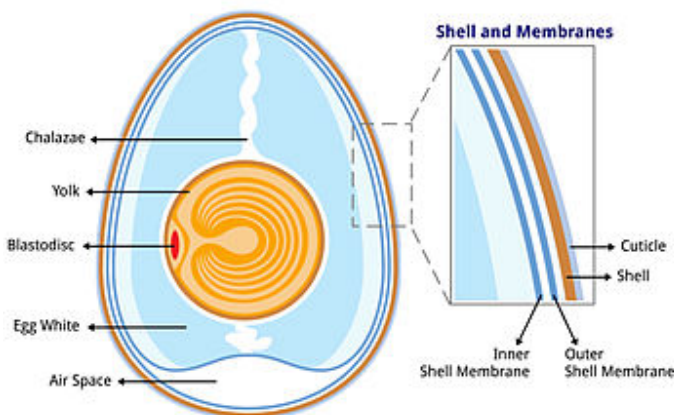




EGGSHELL MEMBRANE

*A biological matrix naturally designed to support the
embryonic development that will help you to*

*promote your overall health
condition and wellness.*



KEY ROLE IN THE EMBRYONIC GROWTH

*Eggshell Membrane participates in the
development of functional organs and
tissues such as blood vessels, immune
system and respiratory organ.*

SATISFIES THE METABOLIC AND NUTRITIONAL NEEDS OF THE DEVELOPING EMBRYO

*Ovommet® contains specific proteins
involved in calcium binding and oxygen
transport.*

PHYSICAL AND MICROBIOLOGICAL PROTECTION

*Ovommet® contains antimicrobial
proteins that protect the embryo from
external pathogens.*

Provide your body with this unique blend of active biomolecules.

